



# PROPERTY INDUSTRY FOUNDATION REGATTA SAILING INSTRUCTIONS

Friday 25 March 2011

Notice to Competitors – Provisional List of Competitors and Starting Handicaps will be published at [www.pif.com.au](http://www.pif.com.au) from 1400hrs, Thursday 24 March 2011

**Organising Authority**  
Middle Harbour Yacht Club  
In conjunction with  
Property Industry Foundation

**Principal Sponsor**



**Middle Harbour Yacht Club**

ABN: 95 000 248 877  
Lower Parriwi Road  
The Spit, Mosman NSW 2088  
Tel: 02 9969 1244  
Fax: 02 9969 3326  
Email: [sailing-administrator@mhyc.com.au](mailto:sailing-administrator@mhyc.com.au)  
Web Site: [www.mhyc.com.au](http://www.mhyc.com.au)

**Property Industry Foundation**

CFN: 14948  
S3/L2 Grafton Bond Building  
201 Kent Street  
Sydney NSW 2000  
Tel: 02 9241 6000  
Fax: 02 9241 1997  
Web: [www.pif.com.au](http://www.pif.com.au)

# Property Industry Foundation

## 2011 Regatta

Friday 25 March 2011



## SAILING INSTRUCTIONS

### Preamble

All Skippers and Crew are reminded of the nature of this Regatta; it is a fund raising event conducted in support of "Helping Young People at Risk".

As such many of the crew on competing yachts are not regular sailors.

Middle Harbour Yacht Club requests that all competing Skippers and Crew make allowance for this lack of sailing experience in crews and participate in the Regatta in a Corinthian Spirit and with the best interests of the sport of sailing and the safety and enjoyment of all participating crew as a prime objective.

### Safety

All those taking part in the Property Industry Foundation Regatta are reminded that they do so at their own risk and responsibility. Neither the Middle Harbour Yacht Club (MHYC), The Property Industry Foundation (PIF), The Event Sponsors or any Officials or Employees involved in the organisation, management or conduct of the event shall be deemed responsible for the seaworthiness of a yacht whose entry has been accepted nor for the adequacy of a yacht's equipment, or the personal safety of its crew. Attention is drawn to Racing Rules of Sailing (RRS) Fundamental Rule 4, which states: ***"A boat is solely responsible for deciding whether or not to start or to continue racing"***.

All skippers are reminded to exercise appropriate caution whilst sailing and if conditions deteriorate or become marginal to assess the risks inherent in continuing to sail and make an appropriate judgment that protects or preserves the safety of those on board the yacht(s) under their care and control. This decision may be to continue at reduced speed or retire and seek refuge.

### Special Note to Competitors

#### 1) Identification and Retirement

Yachts are requested to report to the Committee Vessel prior to their Start, on Starboard tack, with mainsail hoisted, to confirm its intention to race. Yachts which can not be identified will be scored 'DNC'.

Yachts **retiring** from racing shall inform the Committee Vessel by hail or on **VHF Channel 73** at once. Should this be impractical, yachts shall advise the Sailing Office, in person or by telephone, 9969-1244, as soon as practicable. If search and rescue operations are unnecessarily instituted due to the yacht failing to make timely contact, the yacht will be subject to action by the Race Committee under RRS 60.2(c) whereby a report will be made to the Protest Committee requesting action under RRS 69.1(a) - Allegation of Gross Misconduct.

Yachts which do not display a sail number are required to record their own finish time and then to confirm their identity and finish time with the Committee Vessel. Yachts which are unidentified at the finish will be recorded as DNF.

- 2) **Tender Service** to and from MHYC will be available on Regatta Day, 0800 – 1700hrs. Please note the following arrangements to make your day enjoyable.

#### Prior to the Race:

- Contact your crew/sponsors and arrange your meeting place and time in advance.
- Crews need to board yachts early (from 1100hrs) to avoid delays (warning signal is at 1250 hours).
- Tenders to yachts depart from A Arm Marina.
- Yachts must contact MHYC Dockmaster on VHF 73 or 0450 275 554 prior to picking crew up.
- Yachts may pickup crews from the T-Head on B, C & D Marina's once directed by the Dockmaster to do so. Berthing is limited to 10 minutes - make your arrangements in advance to confirm with your sponsor/crew.
- Property Industry Foundation Ground Crew will assist in organising crew to the correct location for pickups or transfer by tender.

- **Please** arrange for *all* your crew to board at the same time.
- Limited service is available to Hunters Bay for Division 1 yachts which cannot enter Middle Harbour because of their depth. Crews boarding these yachts need to leave by tender by 1130 hours at the latest.
- MHYC Tender Service operates from 0900 to 1700 hours on Race Day, in the area bounded by Chinamans Beach and MHYC.

**Post Race**

- Yachts may discharge crew onto Marina Arms B, C or D. Tender Service operates from Marina Arm A. There is no berthing available at MHYC pre or post race, NSW Maritime Temporary Moorings may be available in the area bounded by MHYC and Chinamans Beach.
- A limited tender service will operate from Hunters Bay, for yachts which are constrained by their depth from entering Middle Harbour. These yachts should contact MHYC Dockmaster on **VHF 73** or 0450 275 554 to arrange pick-up. These yachts are requested to ensure there are adequate fenders deployed and the yachts crew assist the tender driver to secure the tender to the yacht and the safe transfer of passengers.

**3) NSW Maritime Regulations;**

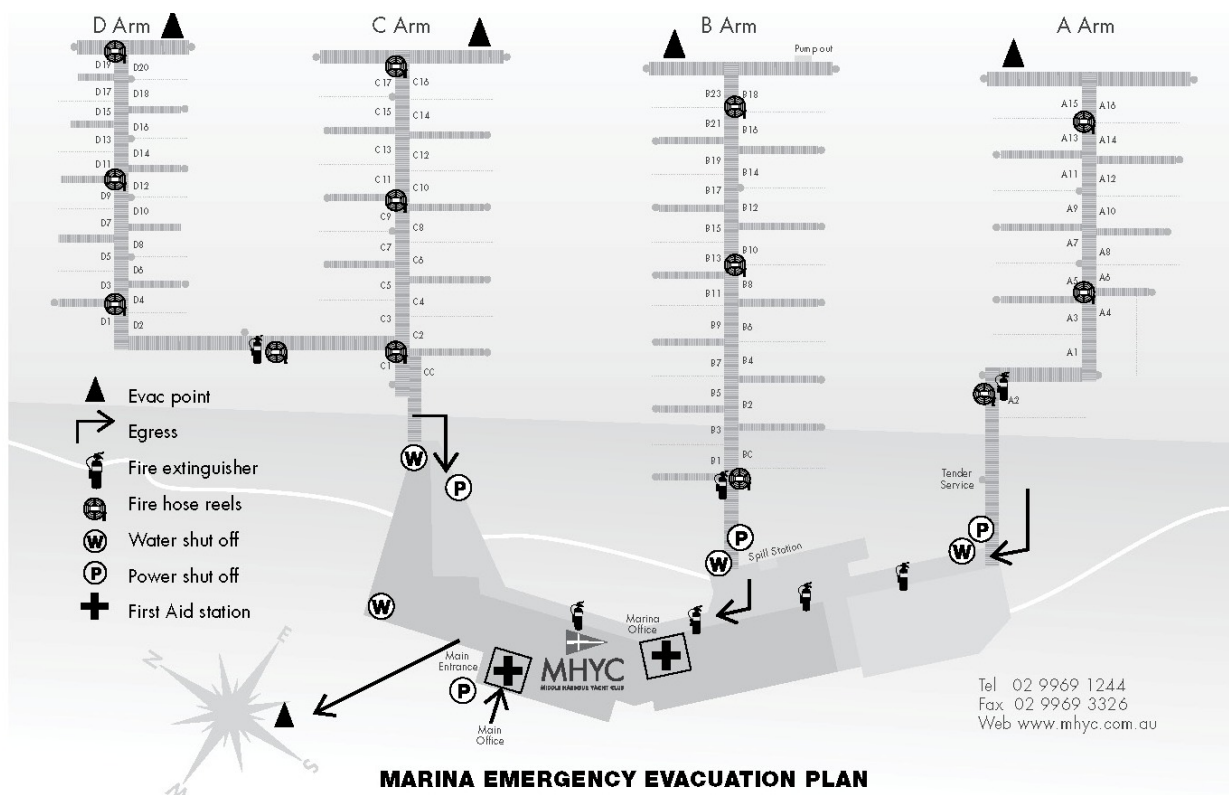
Competitors are reminded of NSW Maritime Regulations in respect of Charter Vessels. Competitors who pay a Charter Fee to a Vessel Operator should ensure that the Vessel is licensed by NSW Maritime and is under the control of a NSW Maritime Licensed Operator and complies with the Commercial Vessels Act (1979).

**The attention of competitors is drawn to Appendix B and Appendix C –**

NSW Maritime Authority Yacht Person's Brief, and the interaction of competitors with Commercial Shipping and Ferry services. For the purpose of the RRS Appendix B and C, form part of the Sailing Instructions.



**MHYC MARINA MAP**



**MARINA EMERGENCY EVACUATION PLAN**

2010-2011 SAILING HANDBOOK



## 1.0 RULES

- 1.1 The Regatta will be governed by the *rules* as defined in the Racing Rules of Sailing (RRS) of the International Sailing Federation (ISAF), the Prescriptions and Special Regulations of Yachting Australia (except as any of these altered by the Sailing Instructions), the rules and regulations of NSW Maritime in regards to Ships and Ferry exclusion zones and by the Sailing Instructions and the MHYC Special Regulations which are published in the [MHYC Sailing Handbook 2010-2011](#).
- 1.2 The Property Industry Foundation Regatta is a Non-Spinnaker Event, no sails may be set forward of a mast which are not normally carried forward of that mast when working to windward. Any sail set forward of a mast shall not be set flying.
- 1.3 Each competing yacht shall hold a current and valid Yachting Australia Special Regulations Compliance Certificate, minimum of Category 7 and have lodged evidence of current and valid personal risk cover, with MHYC of no less than \$A10, 000, 000, by way of a certificate of currency or policy document copy. It shall be the responsibility of the yacht to maintain current and valid cover for the period of the event in which it is an entry and to lodge evidence with MHYC when the cover is renewed or changed.
- 1.4 Alternately, to the requirements of Sailing Instruction 1.3, yachts under Charter or Hire competing in this event shall lodge copy of a Current and valid NSW Maritime Commercial Survey Certificate in lieu of a Yachting Australia Special Regulations Compliance Certificate, minimum of Category 7. These yachts shall in addition lodge evidence of current and valid personal risk cover, with MHYC of no less than \$A10, 000, 000, by way of a certificate of currency or policy document copy. It shall be the responsibility of the yacht to maintain current and valid cover for the period of the event in which it is an entry and to lodge evidence with MHYC when the cover is renewed or changed.
- 1.5 All yachts shall carry as many experienced crew members as are necessary to ensure the yachts safe navigation and the safety of corporate guests whilst competing in this event.
- 1.6 **Yachts shall not compete in this event with anchors stowed outboard of the yachts hull.**
- 1.7 These Sailing Instructions are the Notice and Instructions required by RRS 89.2 and RRS 90.2.

## 2.0 NOTICES TO COMPETITORS

- 2.1 Notices to Competitors will be posted on the Official Notice Board in the Breezeway at Middle Harbour Yacht Club.

## 3.0 CHANGES TO SAILING INSTRUCTIONS

- 3.1 Any changes to the Sailing Instructions will be posted before 0900 hours on the day of racing.

## 4.0 SIGNALS MADE ASHORE

- 4.1 Signals made ashore will be displayed from the Signal Mast of the Middle Harbour Yacht Club Race Officials Box located on the North Western perimeter of the Club Premises.

## 5.0 START TIME

- 5.1 The Nominated Start Time shall be 1300 hours.

## 6.0 START & FINISH LINE / MARKS

- 6.1 The Starting/Finishing line will be an imaginary line between the Committee Vessel (Hugh S George, a white 36' MV) flagmast flying an Orange Flag and an Orange inflatable Mark.
- 6.2 Yachts that are unidentifiable at the finish will be scored DNF by the Race Committee. (Amends RRS 63.1).
- 6.3 Marks may display a sponsors band.

## 7.0 STARTING SEQUENCE & SIGNALS

1250 SOUND SIGNAL  
COURSE NUMBER DISPLAYED FROM COMMITTEE VESSEL

1300 SOUND SIGNAL  
START OF HANDICAP COUNTDOWN FROM COMMITTEE VESSEL

## 8.0 STARTING PROCEDURE

- 8.1 The number '60' will be displayed by the Committee Vessel to start the handicap countdown. The start shall be a handicap start. All yachts will be allocated a handicap prior to the start of the race (from 60 minutes) and each yacht shall start when her number is **DROPPED** i.e. changes to the number below.
- 8.2 Starting handicaps will be available from MHYC reception from 1400 hours Thursday 24 March 2011 and may also be published on the Regatta website [www.pif.com.au](http://www.pif.com.au).
- 8.3 Divisional Cloth & Backstay Pennants will be available for collection at time of Registration and shall be flown for the duration of the Regatta.
- Division 1: Green**  
**Division 2: Black**  
**Division 3: Orange**  
**Division 4: Blue**  
**Division 5: Pink**
- 8.4 For the information of competitors, **Appendix A** (attached) lists the time of day for yachts starts equivalent to their starting handicap. Please correct your own watch to the correct time by dialing '1194' (Telstra Time) prior to the Warning Signal (1250hrs).
- 8.5 Yachts are reminded of their obligation prior to their preparatory signal (4 minutes prior to their posted start time) to keep clear of yachts which are racing. Yachts are requested to keep clear of the Course Side of the Start Line until their Start Time.

## 9.0 RECALLS

- 9.1 There will be no individual recalls. A premature starter (OCS) will be penalised 5 minutes plus the difference between her nominated start time and actual start time. (Amends RRS 29)

## 10.0 TIME LIMIT

- 10.1 The time limit will be 1700 hours. Only those yachts finishing within the time limit shall rank as finishers all other starters will be scored DNF (Amends RRS 35).

## 11.0 COURSES

- 11.1 The Course will be displayed prior to the Warning Signal at 1250hrs and the corresponding number displayed from the Committee Vessel. The Course will be selected from those attached to these Sailing Instructions.
- 11.2 Divisions 4 & 5 yachts omit marks prefixed (x).

## 12.0 CARDINAL MARKS

- 12.1 Competitors are reminded of the requirement under MHYC Special Regulations to pass on the safe water side of all Harbour Cardinal Marks.
- 12.2 Yachts shall pass on the safe water side of all Sydney Harbour Cardinal Marks.
- 12.3 Yachts shall not sail in the following prohibited areas:  
The area bounded by imaginary lines projected from the shore joining the West, South and East Cardinal Marks surrounding Gowlland Bombora.  
The area bounded by imaginary lines joining the North, East, South and West Cardinal Marks surrounding Sow and Pigs Reef.  
The area between YA Mark Shark Island and the South Cardinal Mark Shark Island.
- 12.4 All Cardinal Marks surrounding the Gowlland Bombora and the Sow and Pigs Reef and all imaginary straight lines projected between such marks, shall be deemed obstructions (refer to RRS 19 and 19).

### 13.0 PROTESTS

- 13.1 The Property Industry Foundation wishes to discourage the lodgement of Protests and hopes that all competitors will adopt a spirit of friendly rivalry. Should competitors feel the need to formally protest, such protest shall be written on forms available from the MHYC Race Office and be lodged within one hour of the finishing time of the protesting yacht. Protests will be heard at MHYC on Wednesday 30 March 2011 at 1900 hours.
- 13.2 Competitors are reminded that many of the yachts and guests competing are not regular competitors in Sailing Events and request that you make a special allowance to avoid risk of collision and injury to competitors.
- 13.3 Yachts are reminded of SI 17.0, Alternate Penalty.

### 14.0 COMMERCIAL SHIPPING

- 14.1 Yachts shall comply with the requirements of **Appendix B and C**. (NSW Maritime Regulations)
- 14.2 Commercial ships and ferries may be escorted by a NSW Maritime vessel. The escort vessel maybe outside the distances stated in 14.1. Competing yachts shall not obstruct these escort vessels, cause it/them to move station or collide with them. Competing yachts shall obey all instructions of the escort vessel and shall not pass between the ship being escorted and the escort vessel.  
Complying with an instruction of an escort vessel shall not be grounds for redress under RRS 62.
- 14.3 The attention of competitors is drawn to the International Regulations for the Prevention of Collisions at Sea and the NSW Maritime Authority Special Regulations regarding right of way of vessels entering and leaving port, ferries displaying orange diamonds, and vessels engaged in towing. Yachts are responsible for any damage it may cause to Navigation Marks in the Port and shall, in the event of such damage immediately report the incident to NSW Maritime and the Race Committee. **Appendix B & C – Yachts Person Brief**, attached summaries a yachts obligations in respect of the NSW Collision Regulations which are a Rule that governs this event.

### 15.0 RUBBISH

- 15.1 Yachts shall not dispose of any items such as plastic bags, cans, bottles, etc, into the water. Rubbish bins are provided back at MHYC.

### 16.0 PRIZES

- 16.1 Prizes may be awarded for first, second and third yachts to cross the finishing line in each Divisions, after correction for starting time penalties for yachts OCS at the start, at a presentation to be held at [Middle Harbour Yacht Club](#) at approximately 1800 hours.

### 17.0 ALTERNATE PENALTIES

- 17.1 The Two Turn penalty, RRS 44.2 shall apply.



### 18.0 DISCLAIMER OF LIABILITY

- 18.1 Competitors participate in the Property Industry Regatta 2011 entirely at their own risk. See **RRS 4**, Decision to Race. **“the responsibility for a boat’s decision to participate is a race or to continue racing is hers alone”**.

The Organizing Authority and its Partners and Sponsors will not accept any liability for material damage or personal injury or death sustained in conjunction with or prior to, during, or after the Property Industry Regatta 2011.

# Property Industry Foundation Regatta 2011

Friday 25 March 2011

## COURSES

All marks to be rounded or left to starboard

### Course 1

12.2 miles approx

1. Start in Hunters Bay
2. YA Mark Manly West
3. YA Mark Manly East
4. YA Mark Eastern Channel
5. YA Mark Rose Bay
6. (x) YA Mark Manly West
7. (x) YA Mark Manly East
8. Finish in Hunters Bay

### Course 2

14.0 miles approx

1. Start in Hunters Bay
2. YA Mark Manly West
3. YA Mark Manly East
4. YA Mark Cannae Point
5. YA Mark Eastern Channel
6. Clarke Island
7. Fort Denison
8. (x) YA Mark Manly West
9. (x) YA Mark Manly East
10. Finish in Hunters Bay

### Course 3

14.0 miles approx

1. Start in Hunters Bay
2. YA Mark Rose Bay
3. Clarke Island
4. Fort Denison
5. YA Mark Manly West
6. YA Mark Manly East
7. (x) YA Mark East Channel
8. Finish in Hunters Bay

### Course 4

14.5 miles approx

1. Start in Hunters Bay
2. YA Mark Point Piper
3. Fort Denison
4. YA Mark Manly West
5. YA Mark Manly East
6. (x) YA Mark Shark Island
7. (x) Shark Island
8. Finish in Hunters Bay

### Course 5

14.0 miles approx

1. Start in Hunters Bay
2. YA Mark Manly West
3. YA Mark Manly East
4. YA Mark Cannae Point
5. YA Mark East Channel
6. YA Mark Rose Bay
7. Fort Denison
8. (x) YA Mark Cannae Point
9. (x) YA Mark East Channel
10. Finish in Hunters Bay

### Course 6

16.0 miles approx

1. Start in Hunters Bay
2. YA Mark Manly West
3. YA Mark Manly East
4. YA Mark Cannae Point
5. YA Mark East Channel
6. YA Mark Rose Bay
7. Fort Denison
8. YA Mark Cannae Point
9. (x) YA Mark East Channel
10. (x) YA Mark Rose Bay
11. Finish in Hunters Bay

## Notes:

- 1) Competitors unfamiliar with Sydney Harbour are advised that a Course Chartlet is attached to these Sailing Instructions (Appendix D)
- 2) All Marks to be Rounded or Left to Starboard
- 3) Divisions 4 & 5 yachts omit marks prefixed (x).
- 4) Marks may carry a sponsors band.

## APPENDIX A GUIDE TO STARTING TIMES

H'Cap	Time of Day – Start	H'Cap	Time of Day - Start
60	1301	30	1331
59	1302	29	1332
58	1303	28	1333
57	1304	27	1334
56	1305	26	1335
55	1306	25	1336
54	1307	24	1337
53	1308	23	1338
52	1309	22	1339
51	1310	21	1340
50	1311	20	1341
49	1312	19	1342
48	1313	18	1343
47	1314	17	1344
46	1315	16	1345
45	1316	15	1346
44	1317	14	1347
43	1318	13	1348
42	1319	12	1349
41	1320	11	1350
40	1321	10	1351
39	1322	9	1352
38	1323	8	1353
37	1324	7	1354
36	1325	6	1355
35	1326	5	1356
34	1327	4	1357
33	1328	3	1358
32	1329	2	1359
31	1330	1	1400

- Notes:**
- 1) Yachts start on the drop of their starting handicap
  - 2) For example a yacht starting on a handicap of 50 starts when 50 is dropped and 49 is displayed, I.E. 1311 hours
  - 3) Phone 1194 to correct your watch to time of day, prior to the Warning Signal



## Appendix B

### Yacht Person's Brief

1. **Be Safe!**
2. **Observe NSW Collision regulations and in particular Rule 1 (b) and Rule 2(a) (b) ie:**

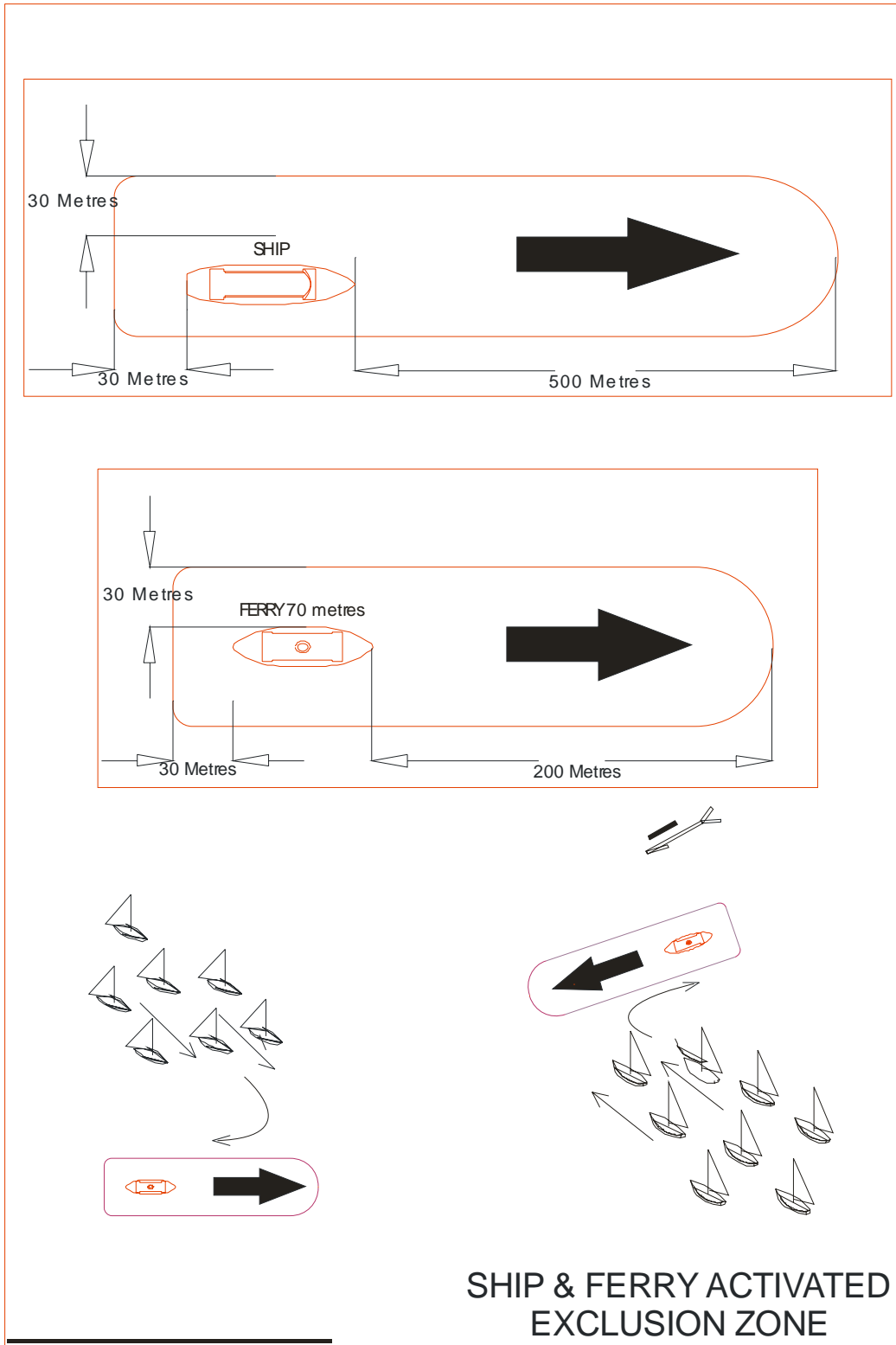
Nothing in these Rules shall exonerate any vessel, or the owner, master or crew thereof, from the consequences of any neglect to comply with these Rules or of the neglect of any precaution which may be required by the ordinary practice of seamen, or by the special circumstances of the case.

In complying with these Rules due regard shall be had to all dangers of navigation and collision and to any special circumstances, including the limitations of the vessels involved, which may make a departure from these Rules necessary to avoid immediate danger.

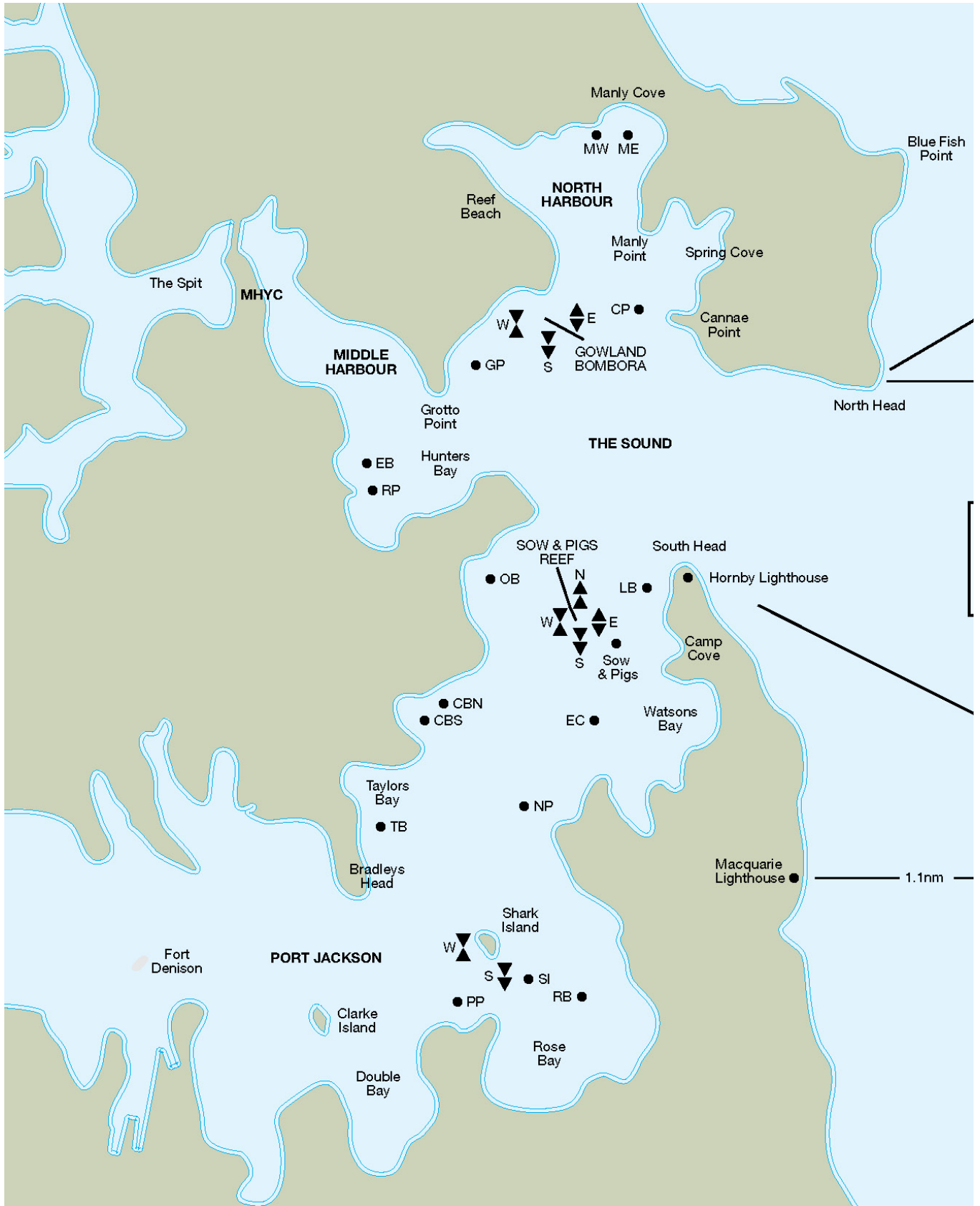
What this means is that if you're about to be involved in a collision, having stood on or given way in accordance with the Rule; every party involved is responsible in taking avoiding action to prevent a collision.

3. **Local Rules require sail craft to keep out of the way of ferries, large cruise ships and oil tankers. Do not impede the safe passage of Commercial Vessel Shipping, Pass at least 500m ahead of their bow. Pass ferries at least 200m from the bow and 30m either side and astern.**
4. Be mindful of larger ships' bow flare. When closing any vessel, to prevent being overrun ensure you remain within sight of the Master / Officer of the Watch on the vessel's bridge. Beware of overhanging bows and other parts of ship that might obstruct this line of sight. This means that your vessel may disappear from sight inside 500m from the bows of very large ships.
5. **Shipping Sound Signal Meanings:**
  - One short blast – I am altering course to starboard (right).**
  - Two short blasts – I am altering course to port (left).**
  - Three short blasts – I am operating engines astern (stopping).**
  - Five (or more) short blasts - I'm unsure of your intentions and I doubt whether you are taking enough avoiding action to avoid collision.**
6. When not racing keep at least 200m clear of any ferries displaying the Orange Diamond.

# Appendix C – Ship and Ferry Activated Exclusion Zone



# Appendix D - Sydney Harbour Charlet





# PROPERTY INDUSTRY FOUNDATION REGATTA

## NOTICE TO COMPETITORS 22/03/2011

### Amendment to Sailing Instruction 8.3 (Divisional Pennants)

Competitors in the Property Industry Foundation Regatta, Division 5, are advised that their backstay pennant shall be PINK.

**Organising Authority**  
**Middle Harbour Yacht Club**  
In conjunction with  
**Property Industry Foundation**

### Principal Sponsor



### Middle Harbour Yacht Club

ABN: 95 000 248 877  
Lower Parriwi Road  
The Spit, Mosman NSW 2088  
Tel: 02 9969 1244  
Fax: 02 9969 3326  
Email: [sailing-administrator@mhyc.com.au](mailto:sailing-administrator@mhyc.com.au)  
Web Site: [www.mhyc.com.au](http://www.mhyc.com.au)

### Property Industry Foundation

CFN: 14948  
S3/L2 Grafton Bond Building  
201 Kent Street  
Sydney NSW 2000  
Tel: 02 9241 6000  
Fax: 02 9241 1997  
Web: [www.pif.com.au](http://www.pif.com.au)